

DARSEY 10242STNS – DARSEY BATH & SHOWER SUITES

102 x 42 x 78 ¾ inches

SOAKER MODEL #10242STNS

WHIRLPOOL MODEL #10242STNSWP



FEATURES

- 2-piece tub & shower suite
- 42" x 42" shower with integral toiletry shelf
- 60" x 42" bathtub with pony wall, 2-sided wainscot and integral skirt
- Subway tile
- Molded toiletry shelves
- 7 ⅝" wainscot
- Right or left hand tub location
- Ergonomic backrest
- Slip-resistant textured bottom
- AcrylX™ applied acrylic surface
- Lifetime limited warranty

Whirlpool Features:

- 6 directional hydrotherapy jets
- Available in White and Biscuit/Linen only
- Color matched trim
- Pneumatic on/off control
- Advanced safety suction system

AQUATIC ADVANTAGE

- National distribution
- 7 manufacturing facilities
- Private fleet
- Centralized customer service
- Field support

COLOR OPTIONS

| Stock | Upgraded | Premium |
|-------|---------------------------------|--|
| White | Almond Biscuit/Linen Bone | Black Mexican Sand Sand Bar Sterling Silver |

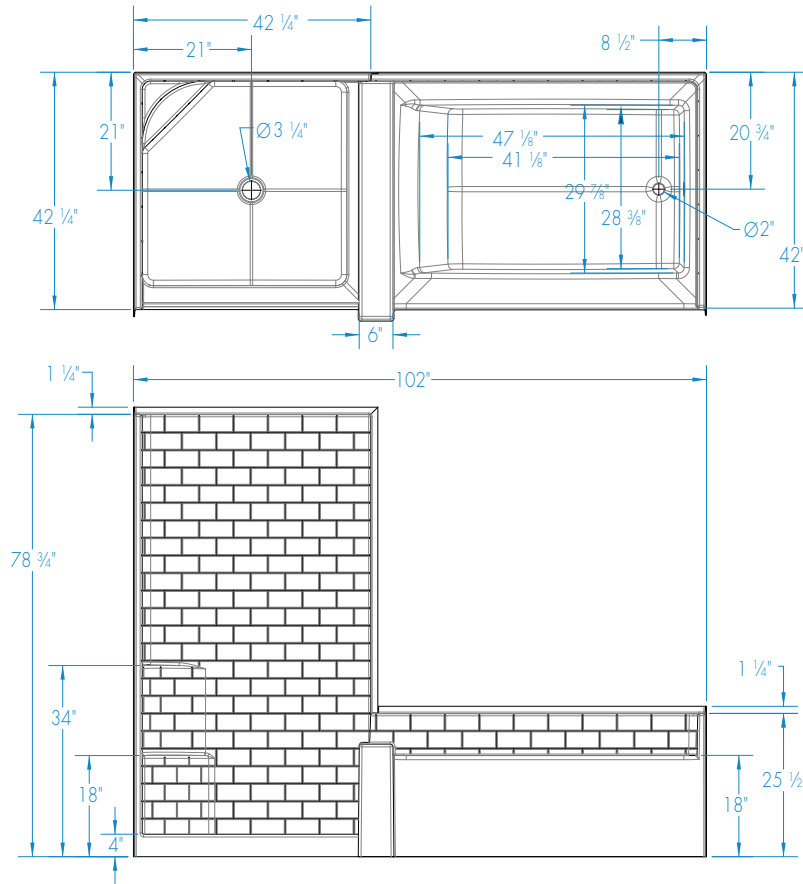
OPTIONS

- Removable access panel (whirlpool models)
- Designer drain, waste & overflow
- Shower Door Series L051



DARSEY 10242STNS

102 x 42 x 78 ¾
inches



FEATURES

Dimensional Tolerance $\pm \frac{3}{16}$ ". Dimensions needed for site preparation should be measured from the unit. Aquatic assumes no responsibility for preparatory work.

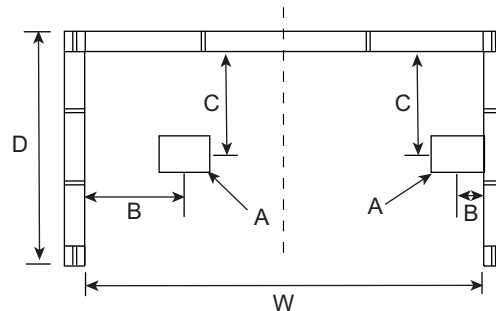
| Model # | Material | Wall Finish | Jets | Motor | Controls | Drain | Net Wt. lbs. | Pkg. Wt. lbs. |
|------------------------|----------|-------------|------|--------|-----------|----------|--------------|---------------|
| Soaker #10242STNS | AcrylX™ | Subway Tile | 0 | - | - | LH or RH | 240 | 250 |
| Whirlpool #10242STNSWP | AcrylX™ | Subway Tile | 6 | 63 GPM | Pneumatic | LH or RH | 290 | 300 |

DIMENSIONS

| Specifications | inches |
|---------------------------------|-----------------------------|
| Width: Overall / Net | 102 |
| Depth: Overall / Net | 43 ¼ / 42 |
| Height: Overall / Net | 80 / 78 ¾ |
| Enclosure Opening | - |
| Skirt Height | 18 |
| Drain Rough-In (from Back Wall) | 20 ¾ tub / 21 shower |
| Drain Rough-In (from Side Wall) | 2 ½ tub / 21 shower |
| Drain: Diameter / Clearance | 2 / ¾ tub 3 ¼ / ¾ shower |

FRAMING DIMENSIONS inches

| Type | D Depth | W Width | H Height | A | B Tub/Shower | C Tub/Shower |
|--------|---------|---------|----------|---------|--------------|--------------|
| Alcove | 43 ¼ | 102 | 80 | Box Out | 2 ½ / 21 | 20 ¾ / 21 |



SUMP DATA

| Top of Drain to Bottom of Overflow | Capacity to Overflow gal | Min. Operating Capacity gal | WIDTH @ centerline | | DEPTH @ centerline | |
|------------------------------------|--------------------------|-----------------------------|--------------------|--------|--------------------|--------|
| | | | Top | Bottom | Top | Bottom |
| 12 ½ | 67 | 50 | 51 ¾ | 41 ½ | 29 ¾ | 26 ¾ |