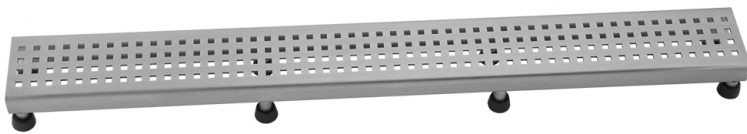


60" Channel Drain Square Dotted Grate

Model #: 6222-60-

FEATURES:

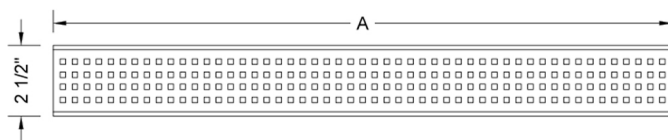
- 304 stainless steel construction
- Nominal Size: 60"
- Key included to remove grate for easy cleaning
- Adjustable feet for perfect installation
- JACLO channel drain body sold separately
- Standard finishes: BSS & PSS. Additional finishes available: BKN, BU, EB, JG, MBK, ORB, PB, PG, SB, SDB, SG, TB, WH. Call for pricing and availability



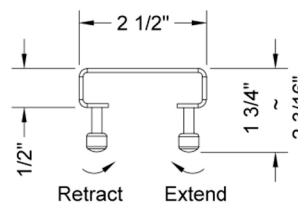
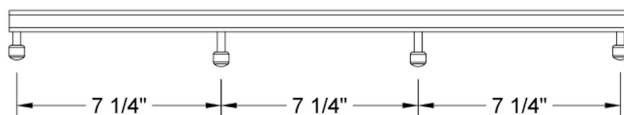
AVAILABLE FINISHES:

Polished Stainless (PSS) Brushed Stainless (BSS)

SPECIFICATION DRAWING:



SIDE VIEW



| JACLO SQUARE GRATE ONLY | | |
|-------------------------|------------------|-----------|
| PART. # | DESCRIPTION | A |
| 6222-24-BSS | 24" SQUARE GRATE | 22 3/16" |
| 6222-32-BSS | 32" SQUARE GRATE | 30 1/8" |
| 6222-36-BSS | 36" SQUARE GRATE | 34 1/16" |
| 6222-42-BSS | 42" SQUARE GRATE | 42" |
| 6222-48-BSS | 48" SQUARE GRATE | 45 7/8" |
| 6222-60-BSS | 60" SQUARE GRATE | 57 11/16" |

COMPLIANCES:



Complies with: ASME A112.18.2-2015/CSA B125.2-15