

Installation Instructions

Towel Bar & Tissue Holder

Model No. 34-02, 34-05, 34-28, 35-02, 35-05, 35-28

NEWPORT BRASS.

Flawless Beauty. From Faucet to Finish.™

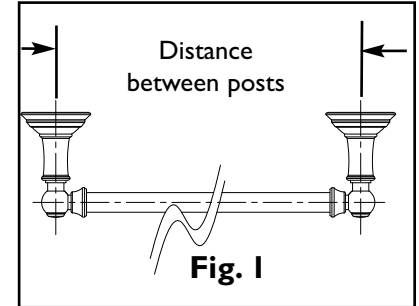
Recommended Installation by a Professional Contractor

1. Using the table below, measure the appropriate distance between post centers.

(See Fig. 1)

Note: Hole locations should be level.

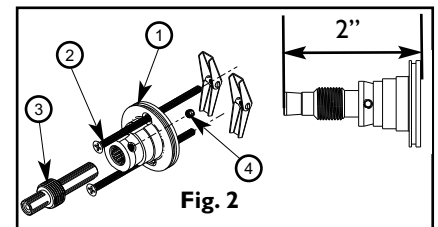
- 24" Towel Bar - 24"
- 24" Double Towel Bar - 24"
- Tissue Holder - 7 1/4"



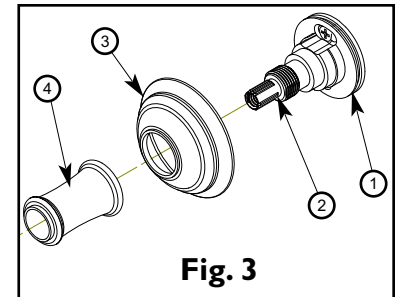
2. Drill hole(s) in wall at points marked using the appropriate drill size:

- Wood Screw (#6 x 2") - use: 3/32" Drill
- Toggle Screw (6-32 x 3") - use: 3/8" Drill

3. Fasten FLANGE (1) to wall using either WOOD/TOGGLE SCREW (3). Engage POST (2), into FLANGE (1). Complete engagement of POST (2) height is 2" from mounting surface. Secure POST (2), into place by tightening SETSCREW (4), on FLANGE (1). (See Fig. 2)



4. Place ESCUTCHEON (3), onto FLANGE (1), place BONNET (4) over POST (2) and against ESCUTCHEON (3). (See Fig. 3)



5a. **Towel bar:** Insert BAR(S) (2) into END POST(S) (1). Slide END POST (1) into BONNET (3). Secure into place with SCREW (4). Place O-RING (5) onto END CAP (6) and press into END POST (1). (See Fig. 4 & 5)

5b. **Tissue Holder:** Slide END POST (1) into BONNET (3). Secure into place with SCREW (4). Place O-RING (5) onto END CAP (6) and press into END POST (1). Place HOLDER (7) between END POSTS (1). (See Fig. 6.)

