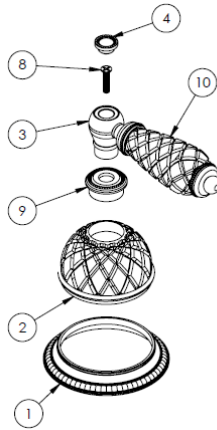
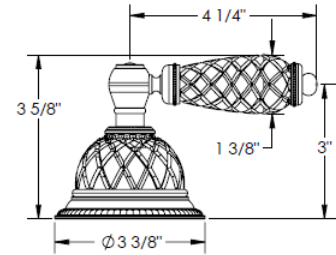


HANDLE TRIMS

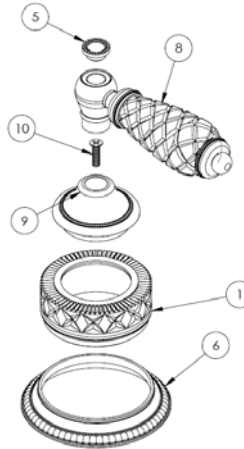
Venice (Code: AA)



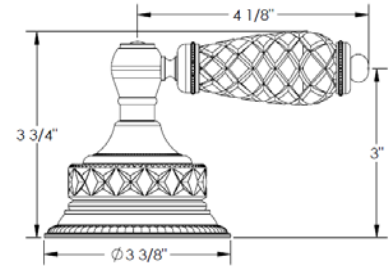
ITEM NO.	PART NUMBER	QTY.
1	AA-ESC-RING	1
2	AA-CRSTL-ESC	1
3	A-POST	1
4	AA-POST-CAP	1
8	CR-FHMS 0.164-32x0.75x0.75-S	1
9	AA-ESC-NUT	1
10	AA-CRSTL-LVR-INSRT	1



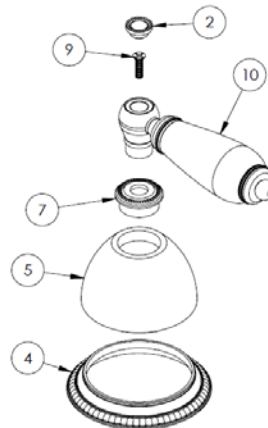
Genoa (Code: BB)



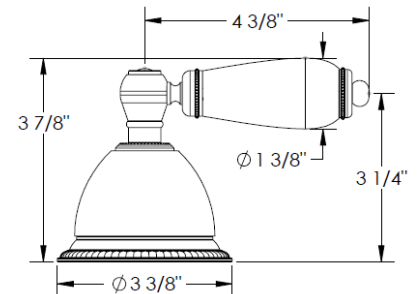
ITEM NO.	PART NUMBER	QTY.
1	BB-CRSTL-ESC	1
5	AA-POST-CAP	1
6	AA-ESC-RING	1
8	AA-CRSTL-LVR-INSRT	1
9	BB-ESC-NUT	1
10	CR-FHM1 0.164-32x0.625x0.625-S	1



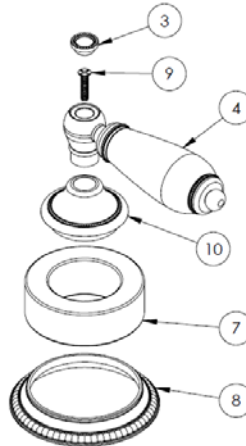
Pompeii (Code: CC)



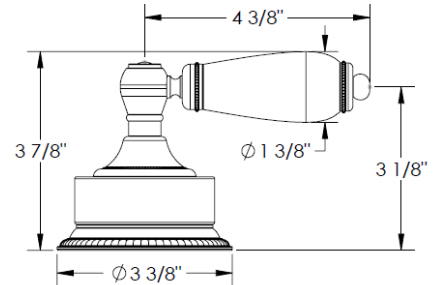
ITEM NO.	PART NUMBER	QTY.
2	AA-POST-CAP	1
4	AA-ESC-RING	1
5	CC-MRBL-ESC-(BLK/WHT/GRY)	1
7	AA-ESC-NUT	1
9	CR-FHMS 0.164-32x0.625x0.625-S	1
10	CC-MRBL-LVR-INSRT-(BLK/WHT/GRY)	1



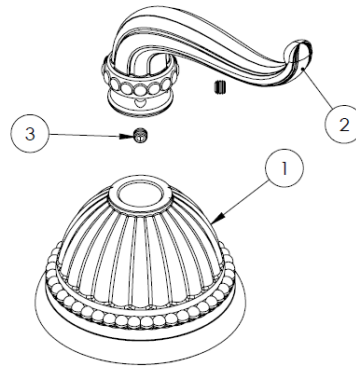
Naples (Code: DD)



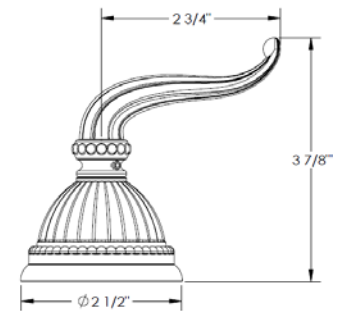
ITEM NO.	PART NUMBER	QTY.
3	AA-POST-CAP	1
4	CC-MRBL-LVR-INSRT-(BLCK/WHT/GRY)	1
7	DD-MRBL-ESC-(BLCK/WHT/GRY)	1
8	AA-ESC-RING	1
9	CR-FHMS 0.164-32x0.75x0.75-S	1
10	BB-ESC-NUT	1



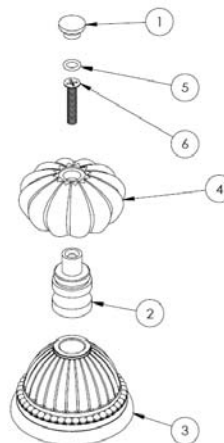
Rimini (Code: S)



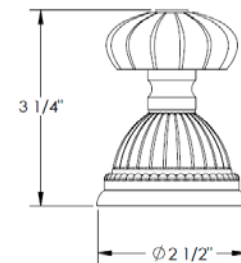
ITEM NO.	PART NUMBER	QTY.
1	S-ESC	1
2	S-LVR	1
3	SSCUPSKT 0.164-32x0.125-HX-S	2



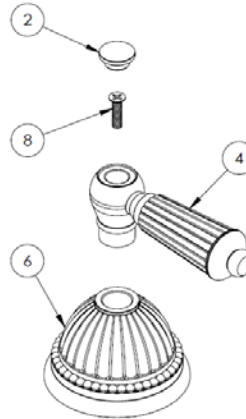
Bologna (Code: T)



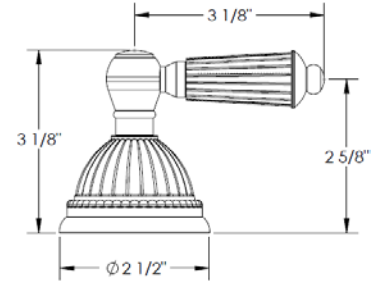
ITEM NO.	PART NUMBER	QTY.
1	H-CAP	1
2	H-POST	1
3	S-ESC	1
4	T-KNOB	1
5	AS568 - 010	1
6	CR-FHM1 0.19-32x1x1-S	1



Tuscany (Code: U)



ITEM NO.	PART NUMBER	QTY.
2	A-POST-CAP	1
4	U-LVR-INSRT	1
6	S-ESC	1
8	CR-FHM1 0.164-32x0.625x0.625-S	1



Specification from Finished Wall to Tip of Broach Stem

HANDLE TRIM #	MEASUREMENT (IN.)
AA/ BB/ CC/ DD	3 1/4
S	2 3/4
T	2 1/2
U	2 1/2

Note: When fitting handle it may be necessary to shorten broach stem and/or threaded nipple to eliminate gap between handle and escutcheon

IMPORTANT INSTALLATION INFORMATION

- USE TEFLON TAPE OR PIPE SEALANT FOR THREADED CONNECTIONS
- DO NOT USE PLUMBER'S PUTTY ON ANY OF THE BRASS COMPONENTS
This will cause the finish to tarnish and void the warranty. A non-corrosive Alkoxy Silicone is recommended.
- DURING SWEATING OF LINES DO NOT OVERHEAT CASTING
Overheating may cause damage to internal mechanism
- COPPER ADAPTORS MAY BE REQUIRED TO COMPLETE YOUR INSTALLATION

For technical support, please call 718-257-2800